



FIRESTONE VENTURES INC.

PURE ZINC-PLAY COMPANY

BUILDING ZINC-LEAD-SILVER TONNAGE IN THE AMERICAS



TSX-V: FV | FSE: F5V | www.firestoneventures.com

JANUARY, 2012

This presentation contains forward looking statements; including in particular, statements about Firestone Ventures Inc.'s plans, strategies and prospects. These have been based on the Company's current assumptions, expectations and projections about future events.

Although the Company believes that the expectations reflected in these forward looking statements are reasonable, the Company can give no assurance that these expectations will prove to be correct or that the results anticipated in the forward looking statements will be achieved. Those forward looking statements include risks and uncertainties, which relate to, amongst other things, market conditions, industry uncertainty and other such factors which may cause the Company's actual results to be materially different.

Firestone Ventures is a zinc exploration company focused on identifying mineral opportunities and building zinc-lead-silver tonnage in Guatemala, Central America

In Guatemala:

- Dominant land holder with first-mover status in a historical zinc-lead-silver belt
- Large land position – over 700 sq km of exploration properties
- Drilled Torlon Hill and Quetzal zinc projects, additional drill targets being evaluated
- Measured and Indicated zinc-lead-silver 43-101 compliant Resources at Torlon Hill project
- 330 million pounds of zinc, 114 million pounds of lead and 978,000 ounces of silver have been defined to date at Torlon Hill
- High grade open-pittable zinc-lead-silver mineralization at Torlon Hill is on or near surface
- Torlon Hill zinc-lead-silver deposit is 22 km from the Pan American Highway
- Democratic government – major mining investment by Tahoe Resources, Anfield Nickel and Goldcorp

Business Plan

- Identify and explore zinc prospects in Guatemala and Nevada with an objective of defining new economically feasible zinc deposits and districts

TORLON HILL ZINC-LEAD-SILVER DEPOSIT – GUATEMALA

- road accessible, open for expansion

Measured & Indicated Oxide Resource:

1.9 million tonnes grading 7.32% zinc, 2.41% lead and 14.25 g/t silver

Measured & Indicated Sulphide Resource:

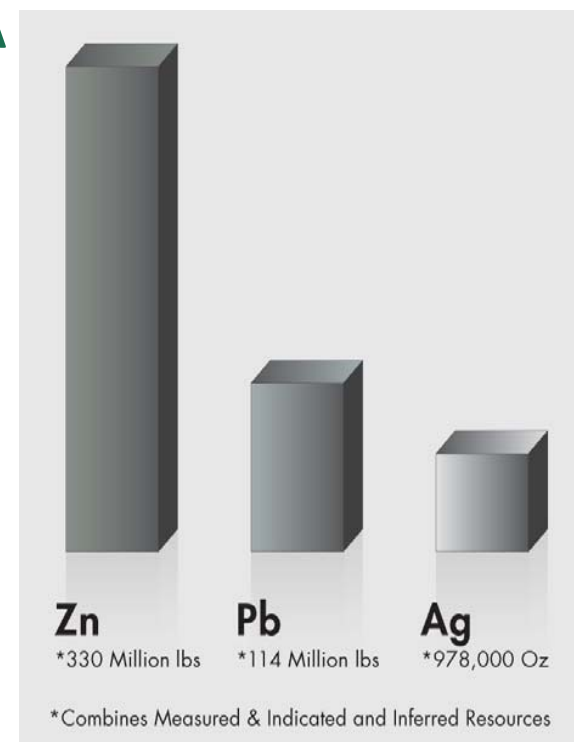
76,054 tonnes grading 3.23% zinc, 2.60% lead and 12.50 g/t silver

Inferred Oxide Resource:

170,000 tonnes grading 4.42% zinc, 1.96% lead and 12.53 g/t silver

Inferred Sulphide Resource:

36,291 tonnes grading 2.79% zinc, 2.03% lead and 10.47 g/t silver



**NI 43-101 compliant resources – Watts, Griffis and McQuat Limited, Nov. 18, 2008. Using 3% zinc-equivalent Cut-Off and 35.5% Zinc Top-Cut*

Lori Walton, M.Sc., G.G., P.Geo. – President and CEO, Director
25 years' experience managing projects, exploration programs and joint ventures

Pamela Strand, M.Sc., P.Geo. – Executive Vice President, Director
President of Shear Diamonds Inc.

Greg Hayes, C.A. – CFO
President of Northern Tiger Resources Inc.

Ken Powell, DDS – Chairman and Director
20 years' experience in venture capital projects and public company involvement

John Kowalchuk, P.Geo. – Director
40 years' experience project mgmt. experience with senior & junior companies

Shares Issued: 121,859,757
 Fully Diluted: 149,652,257
 Debt: \$0

Recent Share Price: \$0.05
 52 Wk High/Low: \$0.20 / \$0.04

Exercise Price	Number	Value	Expiry Date
<i>Warrants</i>			
\$0.20	6,250,000	\$1,250,000	Mar 05, 2012
\$0.15	6,727,500	\$1,009,125	Jan 18, 2013
\$0.15	25,000	\$3,750	Jan 27, 2013
\$0.10	10,340,000	\$1,034,000	Dec 21, 2012
TOTAL	13,002,500	\$3,296,875	
<i>Options</i>			
\$0.15	1,410,000	\$211,500	Jun 16, 2013
\$0.17	420,000	\$71,400	Feb 1, 2012
\$0.80	1,000,000	\$800,000	Jun 19, 2012
\$0.68	285,000	\$193,800	Jun 19, 2012
\$0.10	1,335,000	\$133,500	Dec 15, 2013
TOTAL OPTIONS	4,450,000	\$1,410,200	

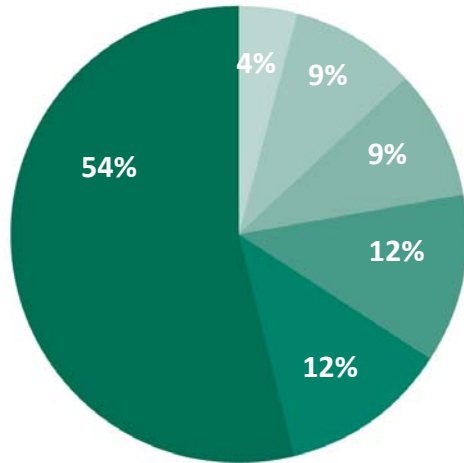
FIRESTONE VENTURES INC.

- Few pure zinc play exploration companies on the market.
- Work with senior gold companies (Kinross, Goldcorp) to explore their base metal properties.
- Firestone has defined a zinc-lead-silver resource in Guatemala and has first-mover status in historical zinc belt.



FORECAST DEMAND FOR ZINC IS ROBUST!

- Most zinc is used for galvanization (making steel rustproof).
- BRIC countries are increasing their zinc consumption as the world economy improves and infrastructure spending has increased.
- Automobile sales in China were up 32% in 2010.
- Automobile production in Brazil jumped 14.3% in 2010.



- Galvanizing (zinc is used as a coating to make steel rust-proof)
- Die Casting (doors, handles, tools)
- Brass and Bronze
- Semi-manufacturers
- Chemicals (fertilizer, sunscreen)
- Others (vitamin supplements)

Global Demand for zinc is driven mainly by automobile demand and infrastructure projects including bridges and buildings.



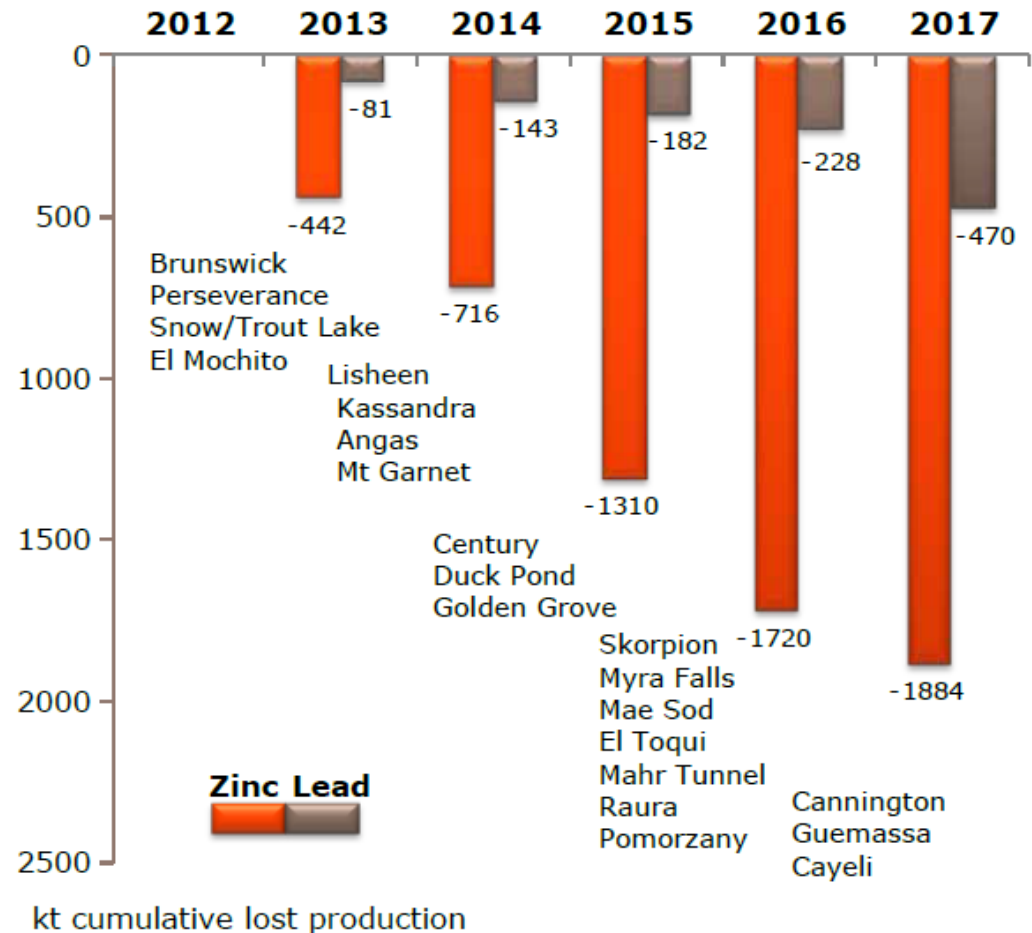
- The average automobile contains:
 - 17 lbs of zinc to protect against rust
 - 20 lbs of zinc for door handles, locks and other die cast parts
 - ½ lb of zinc in each tire
- Zinc is also used in fertilizer, vitamins, sunscreen, watercolours, paints and batteries

Several of the world's major zinc-lead mines are slated to close in the coming five years due to lack of ore.

Mine expansions have provided new zinc supply; however most of the expansion projects are finished.

The projected mine closures will generate a sharp decline in availability of zinc concentrate for zinc smelters/refineries.

Expected zinc and lead mine closures



There are few new sources of zinc supply entering the market.

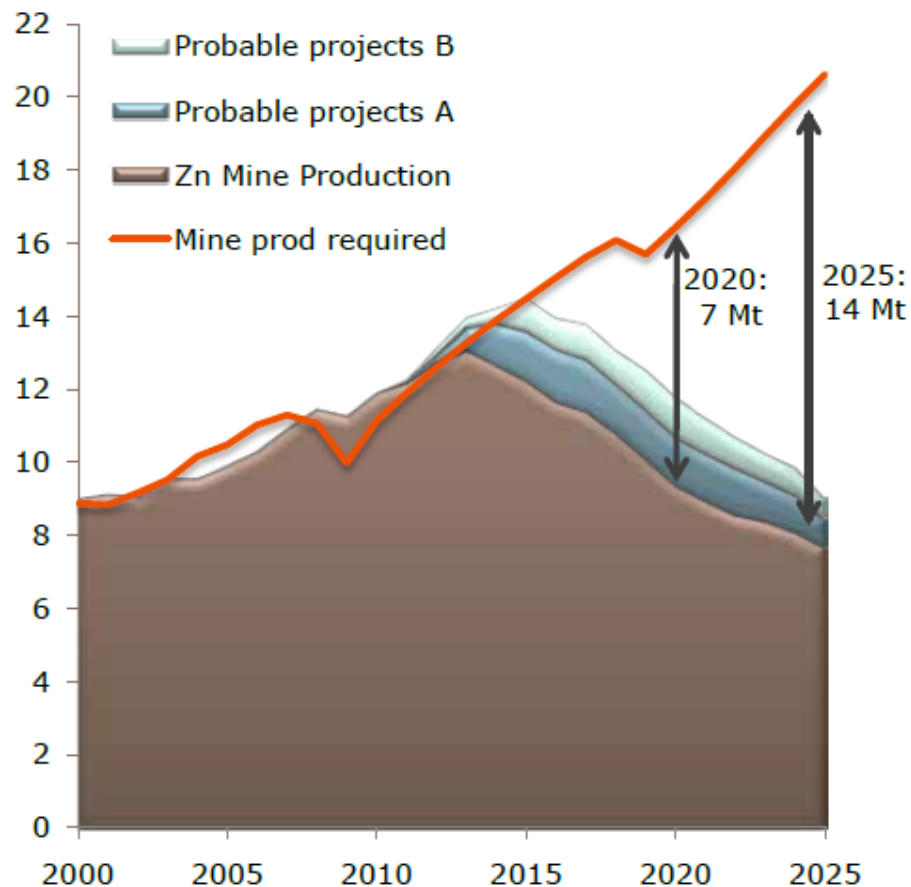
Most zinc mines are underground and are harder to expand than open-pit mines.

Of key importance to new zinc mining projects are grade and availability of infrastructure.

Firestone Ventures Inc. Torlon Hill Project:

- 22 km from Pan American Highway
- Road-accessible
- Open-pit, ore is on or near-surface
- 10.55% Zn eq. grade
- Zinc, lead and silver credits
- Open for expansion
- Development of new zinc-lead-silver district

Forecast global zinc mine production and consumption



Source: Xstrata Zinc

Nevada, U.S.A.

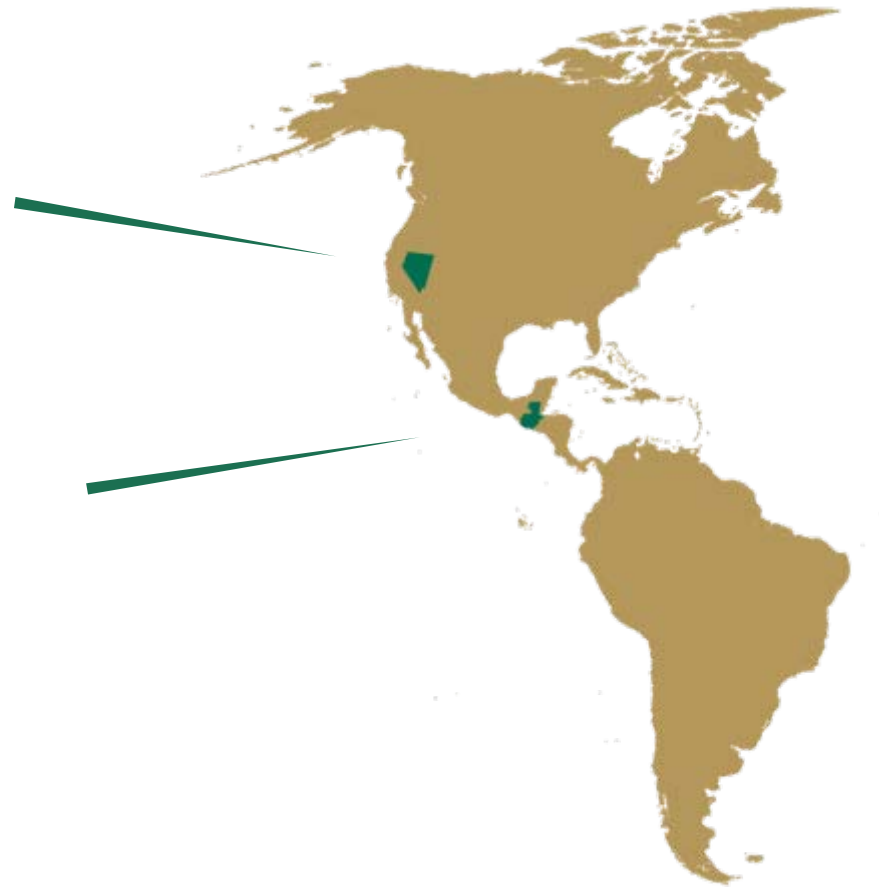
Antelope Zinc-Lead-Silver Property*

Guatemala, Central America

Torlon Hill Zinc-Lead-Silver Zinc Oxide Deposit

Quetzal Zinc-Lead-Silver Zinc Oxide Property

Large land position



** Available for option*

GUATEMALA

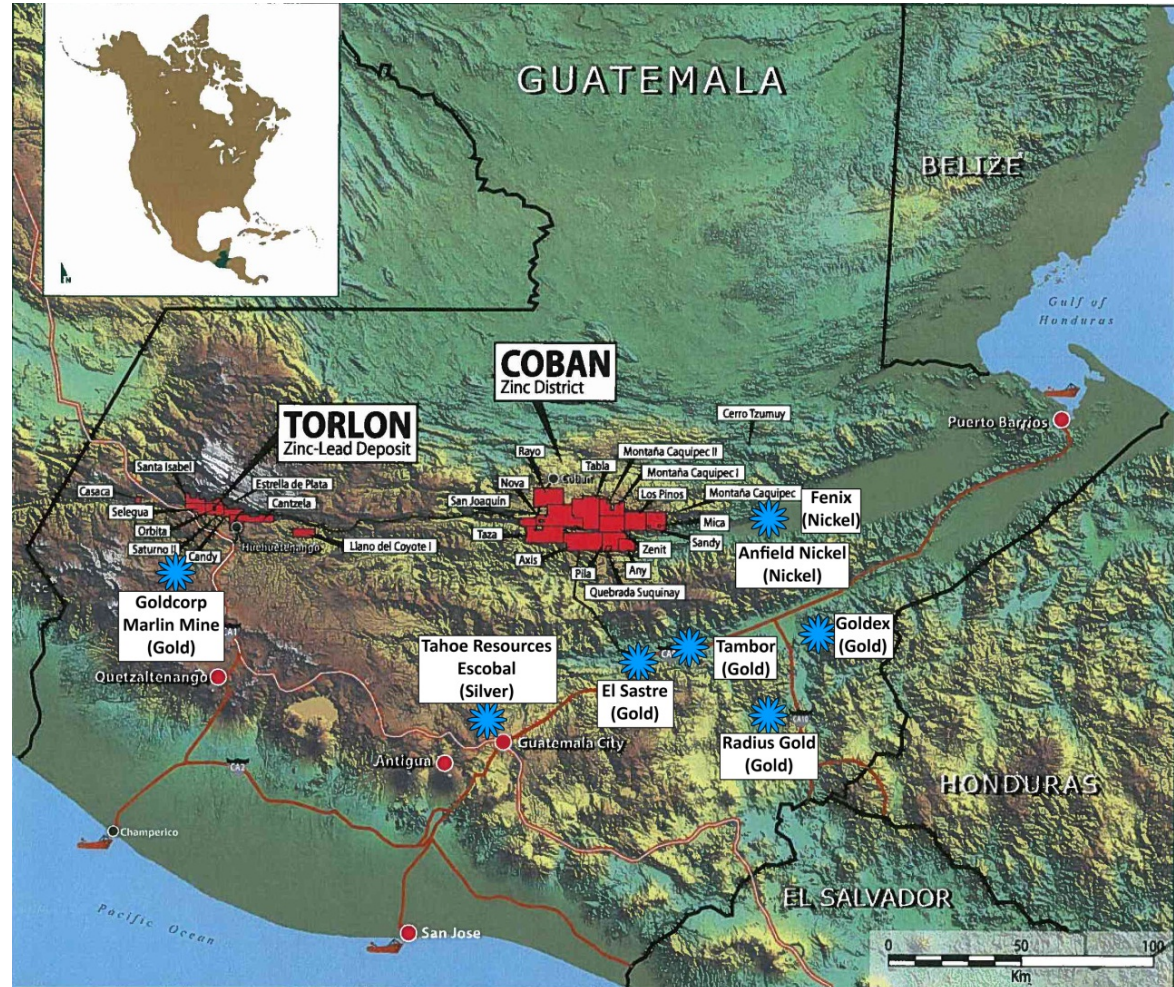
- Democratic government
- Underexplored

MAJOR MINERAL PROJECTS

- **ESCOBAL Silver**
Tahoe Resources Inc.
- **MARLIN Gold**
Goldcorp Inc. – In Production
- **ANFIELD Nickel**
Advanced Drilling
- **TAMBOR Gold**
Radius Gold Inc.– In Permitting Stage

FIRESTONE VENTURES INC.

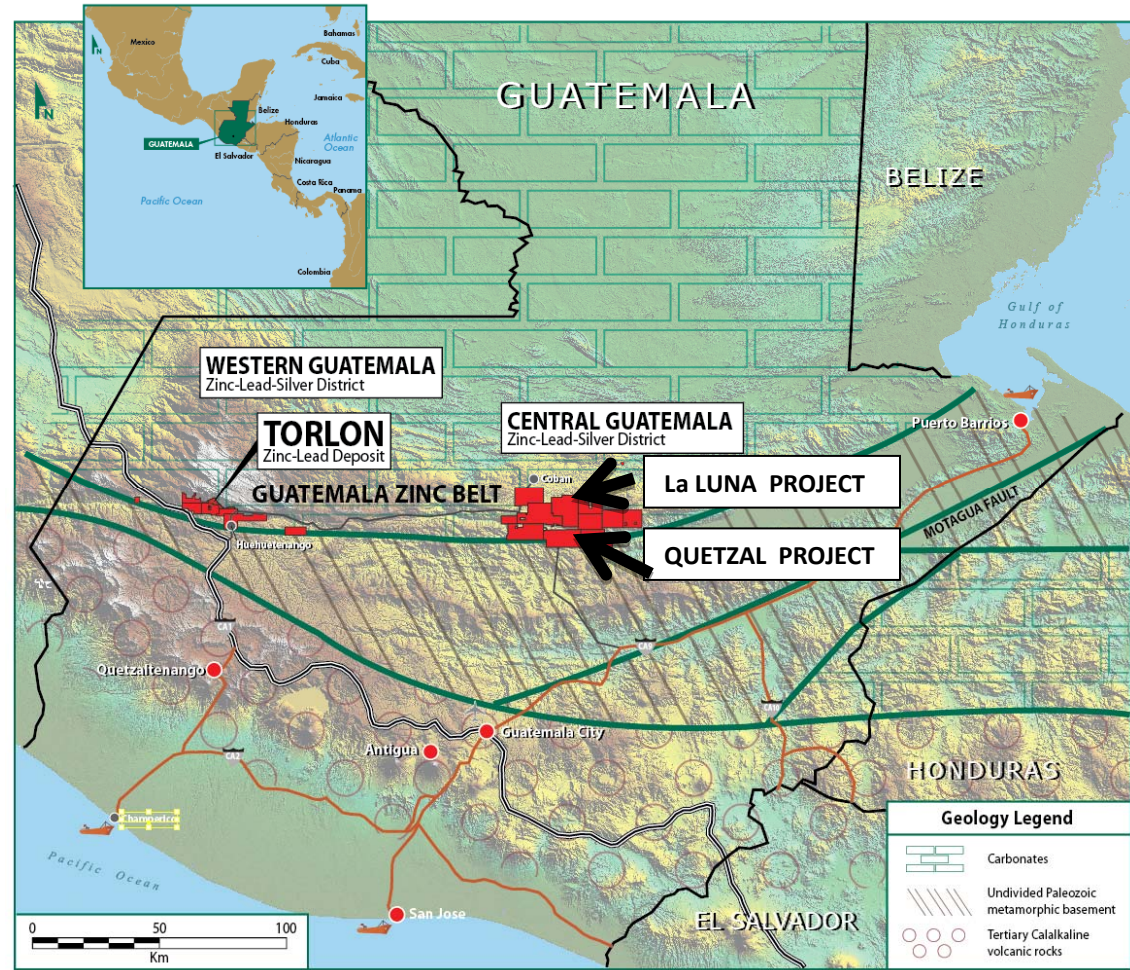
- **Torlon Hill Zinc-Lead-Silver Deposit**
43-101 Compliant Resources
- **Guatemala Coban Zinc Belt Exploration**
Regional and Property-scale Geological Fieldwork,
Drilling and Evaluation of Additional Drill Targets



Firestone mineral holdings in red: includes licenses granted by the Guatemalan Ministry of Energy and Mines, licenses to be transferred and licenses under application.

ABOUT MISSISSIPPI VALLEY TYPE (MVT) ZINC DEPOSITS

- Supply 20% of world's zinc.
- Guatemala Zinc Belt setting is typical of many globally significant MVT districts (e.g. Iran and China).
- The geological and geographic setting in Guatemala is also ideal for formation of supergene "zinc-oxide" type deposits (e.g. Torlon Hill).
- MVT Deposits generally occur in clusters, most are 1-10 million tonnes grading between 5 to 10% combined zinc-lead + silver.
- Potential in the Guatemala Zinc Belt is excellent for finding multiple MVT zinc-lead-silver deposits.



Red Blocks: Firestone mineral holdings including licenses granted, licenses to be transferred and licenses under application to the Ministry of Energy and Mines.



105 holes/8,591m drilled. The deposit remains open to the west and the south.

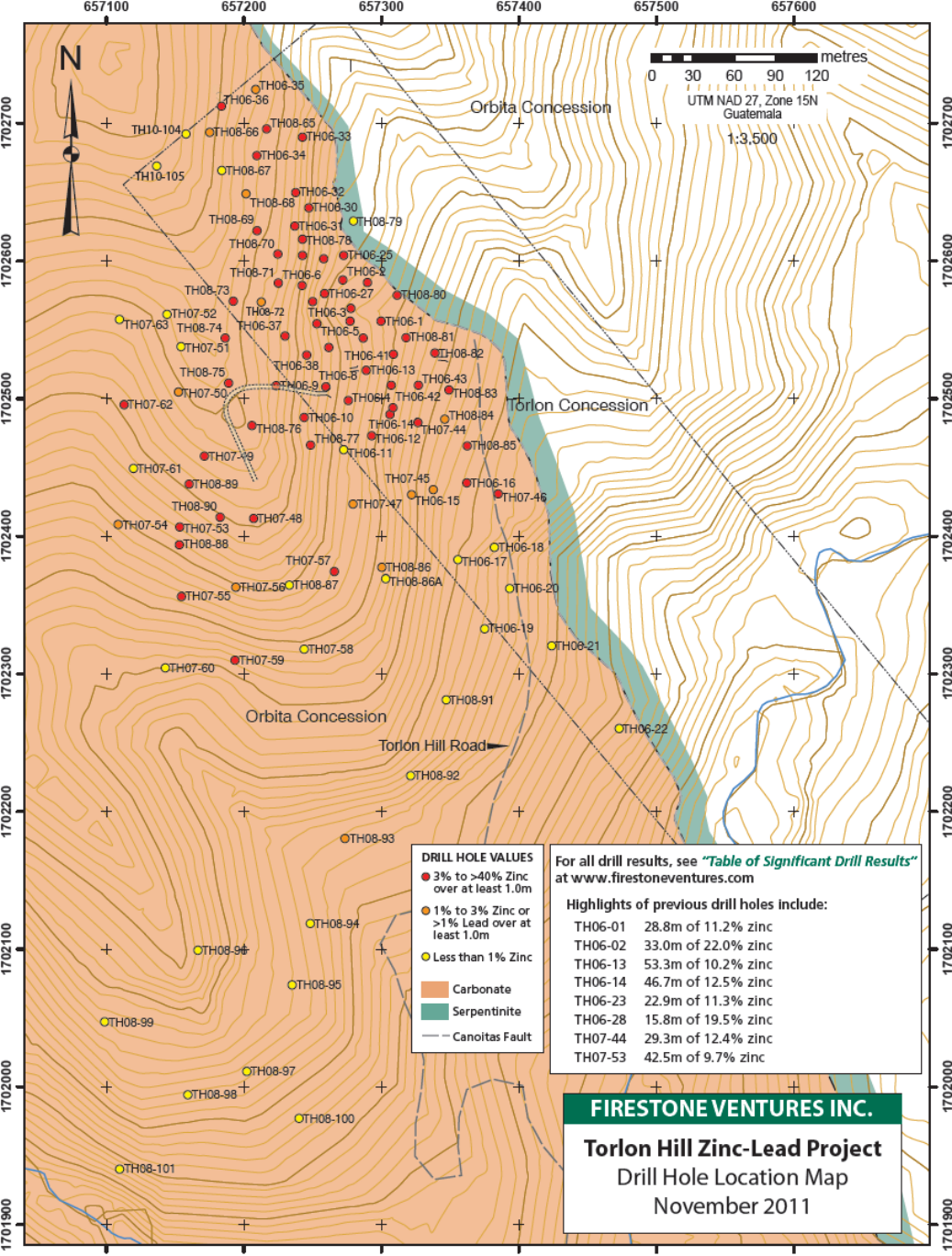
- Torlon Hill is an intensely oxidized zinc-lead deposit hosted in Permian dolostone breccia and limestone. The carbonate unit has been tectonically thrust over a serpentinized basement sequence at the boundary between the North American tectonic plate and the Caribbean tectonic plate.
- The “tectonic crush zone” at Torlon Hill is pervasively mineralized with thick zones returning in excess of 10% and locally up to 40% zinc.
- The deepest drill hole to date is 185.97 metres, mineralized carbonate is faulted against serpentinite



Mineralogy:

Smithsonite ($ZnCO_3$) with minor Galena

Pyrite/Sphalerite/Galena at the bottom of some drill holes



Intersections include:

Hole	Thickness	Zinc	Lead	Silver
TH06-2	33.0 m	22.0%	1.4%	7.5 g/t
TH06-13	53.3 m	10.2%	1.7%	13.0 g/t
TH06-14	46.7 m	12.5%	0.4%	4.5 g/t
TH06-23	22.9 m	11.3%	3.4%	25.0 g/t
TH06-27	19.8 m	13.2%	2.9%	20.0 g/t
TH06-28	15.8 m	19.5%	2.3%	16.0 g/t
TH06-41	25.6 m	10.1%	3.8%	15.0 g/t
TH07-44	29.3 m	12.4%	4.2%	18.0 g/t
TH07-53	42.5 m	9.7%	4.7%	20.0 g/t
TH08-80	19.8 m	10.0%	4.7%	13.8 g/t

DRILL HOLE VALUES

- 3% to >40% Zinc over at least 1.0m
- 1% to 3% Zinc or >1% Lead over at least 1.0m
- Less than 1% Zinc

Legend:
 Carbonate
 Serpentinite
 Canoitas Fault

For all drill results, see "Table of Significant Drill Results" at www.firestoneventures.com

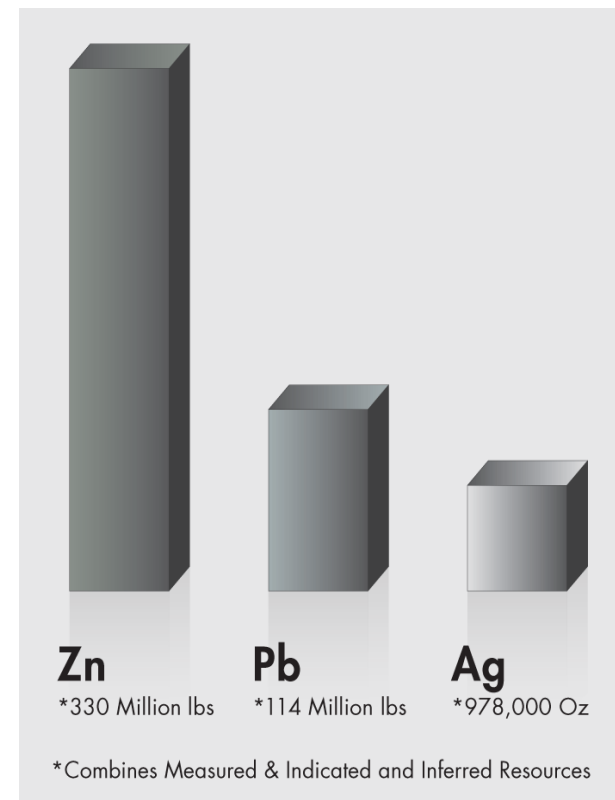
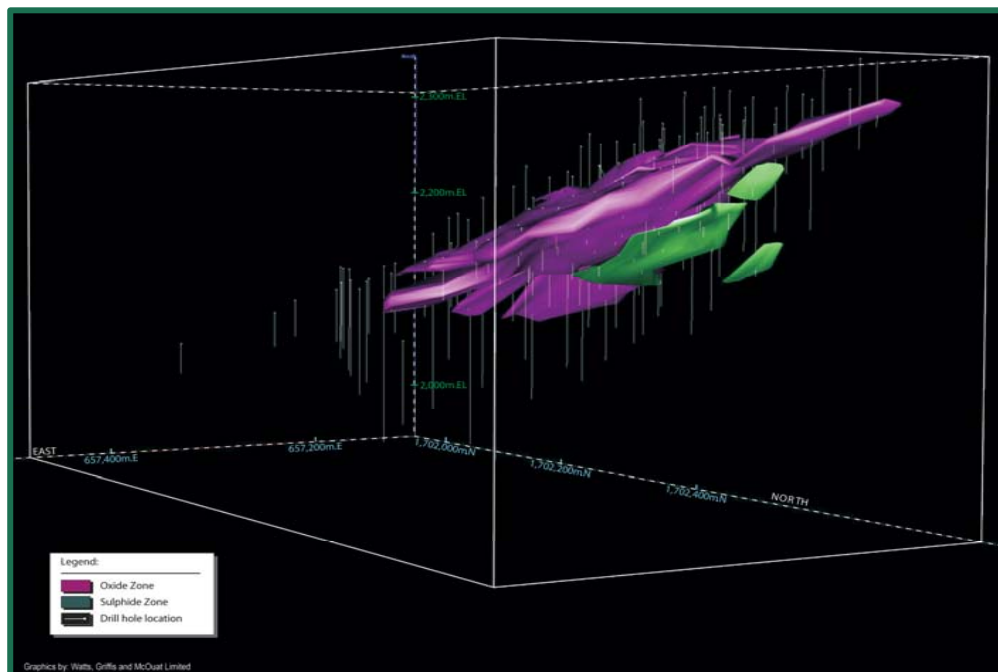
Highlights of previous drill holes include:

- TH06-01 28.8m of 11.2% zinc
- TH06-02 33.0m of 22.0% zinc
- TH06-13 53.3m of 10.2% zinc
- TH06-14 46.7m of 12.5% zinc
- TH06-23 22.9m of 11.3% zinc
- TH06-28 15.8m of 19.5% zinc
- TH07-44 29.3m of 12.4% zinc
- TH07-53 42.5m of 9.7% zinc

FIRESTONE VENTURES INC.

Torlon Hill Zinc-Lead Project
 Drill Hole Location Map
 November 2011

Note:
 High-grade zinc mineralization in most holes begins on or near-surface.
 Expansion drilling on west side of Torlon Hill intersected buried mineralization starting at 50 m depth of 42.3 m of 9.7% zinc (TH07-53).



TORLON HILL ZINC-LEAD-SILVER DEPOSIT – GUATEMALA

Measured & Indicated Oxide Resource:

1.9 million tonnes grading 7.32% zinc, 2.41% lead and 14.25 g/t silver

Measured & Indicated Sulphide Resource:

76,054 tonnes grading 3.23% zinc, 2.60% lead and 12.50 g/t silver

Inferred Oxide Resource:

170,000 tonnes grading 4.42% zinc, 1.96% lead and 12.53 g/t silver

Inferred Sulphide Resource:

36,291 tonnes grading 2.79% zinc, 2.03% lead and 10.47 g/t silver

*NI 43-101 compliant resources – Watts, Griffis and McQuat Limited, Nov. 18, 2008. Using 3% zinc-equivalent Cut-Off and 35.5% Zinc Top-Cut

Firestone has conducted extensive preliminary metallurgical testing.

Laboratories engaged include SGS Lakefield, PRA Ltd., MetaLeach Limited; Engitec and University of British Columbia

Testwork on Torlon ore includes:

- detailed mineralogical examination
- dense media separation
- flotation
- zinc leaching utilizing different techniques and reagents

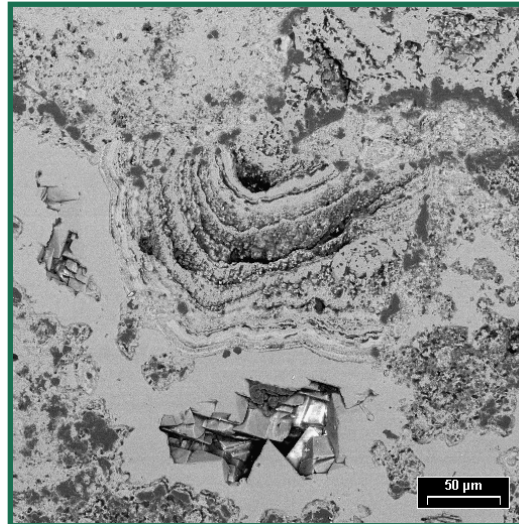
The most promising test results to date are from tests utilizing an ammonia-based process.

From tests carried out by MetaLeach Limited, leaching of representative material from Torlon Hill (average head grade 6.99%) showed that the average zinc dissolution using AmmLeach® was 79% and potentially high recoveries of >75% should be achievable.

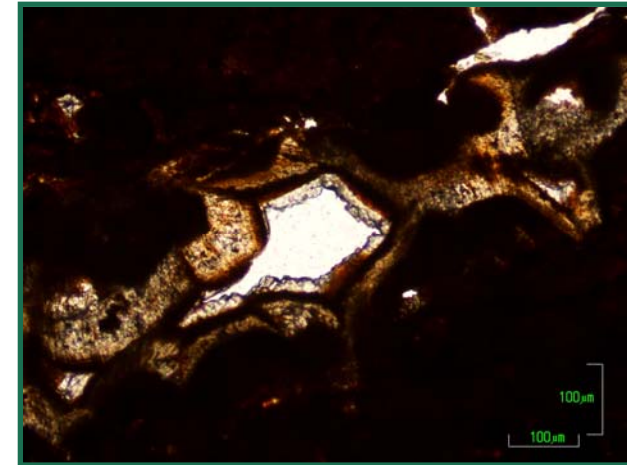
AmmLeach® is a proprietary ammonia-based leaching technology developed by MetaLeach, a subsidiary of Alexander Mining, for the extraction of base metals, especially copper and zinc oxide. A key proprietary component of the AmmLeach® process is a tailored pre-treatment step.



Smithsonite vein in drillcore – Torlon Hill



Finely crustiform smithsonite vein and smithsonite rhombs – Scanning Electron Microscope, Torlon Hill sample



Late smithsonite vein – Scanning Electron Microscope, Torlon Hill sample

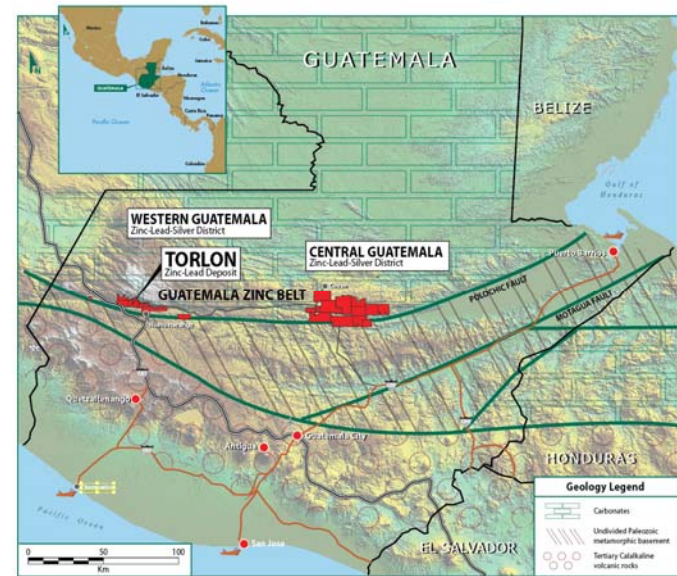
DOMINANT LAND POSITION – ADDITIONAL ZINC DRILL TARGETS

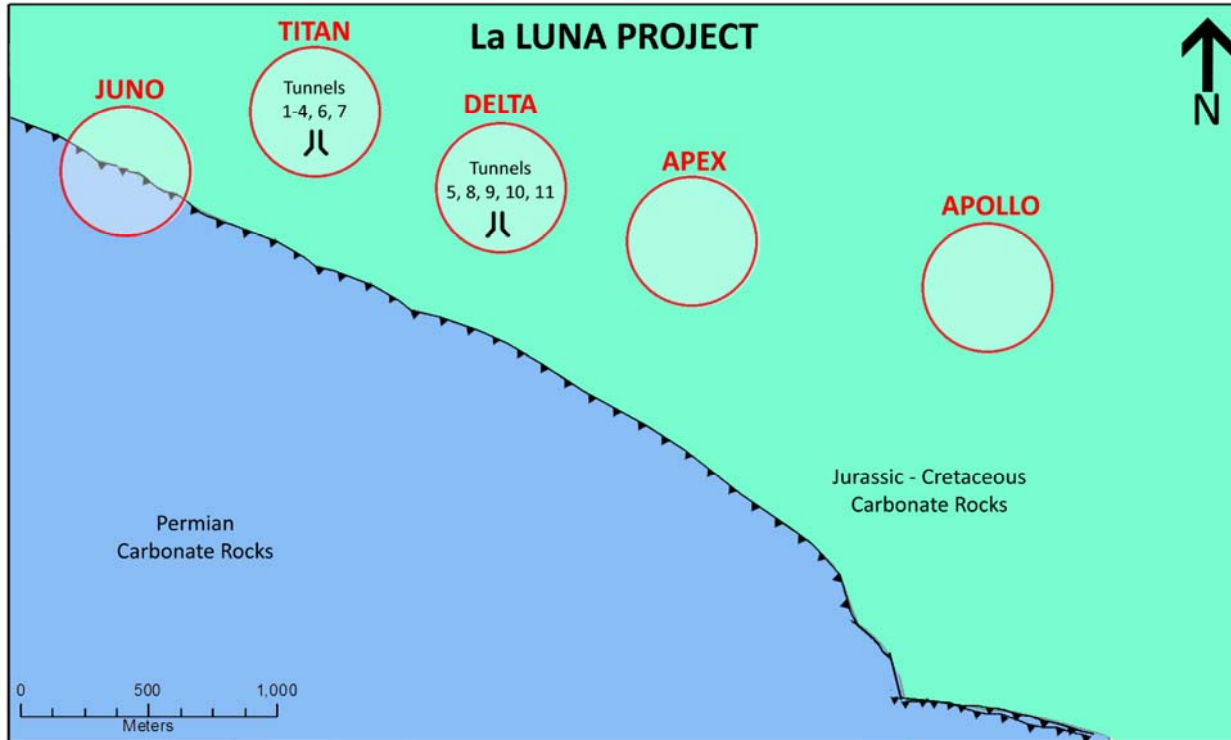
- In 2009 during the economic slowdown, Firestone acquired a large land position for zinc-lead-silver prospects in Guatemala.
- Exploration started and the first drill target, the Quetzal project, was drilled in 2010.
- Firestone has expanded its land position further, and field crews are conducting reconnaissance and property scale exploration to delineate and prioritize future zinc drill targets with a focus on central Guatemala.

QUETZAL DRILL PROGRAM (completed Phase One 2010)

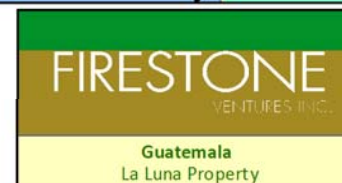
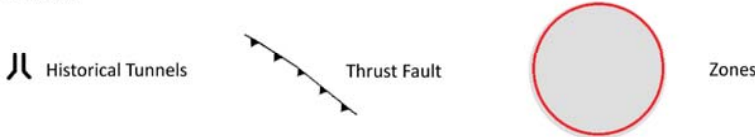
- Road accessible project with MVT zinc-lead-silver mineralization
- High-grade zinc-lead-silver on surface and in historical mine workings.
- Drill results include 10m grading 20.0% zinc, 1.2% lead and 13.9 g/t silver including 1.6m grading 38.35% zinc, 5.82% lead & 51.9 g/t silver.

*Quetzal Project – Drill Core
1,297.01 Metres In 19 Drill Holes*





LEGEND



*Schematic Diagram



New Property in Central Guatemala – 80 km north of Guatemala City

Tunnel #1

2 metre chip sample - 29.70% zinc, 2.45% lead and 18.1 ppm (0.52 opt) silver

Tunnel #2

2 metre chip sample - 36.12% zinc, 11.26% lead and 79.5 ppm (2.31 opt) silver

2 metre chip sample - 2.92% zinc, 25.22 % lead and 163.9 ppm silver (4.75 opt) silver

Tunnel #3

2 metre chip sample - 3.72% zinc, 38.89% lead and 500.3 ppm silver (14.51 opt) silver

Tunnel #11

2 metre chip sample - 34.42% zinc, 4.56% lead and 23.5 ppm (0.68 opt) silver

AVAILABLE FOR OPTION: DRILL-READY ANTELOPE ZINC PROPERTY



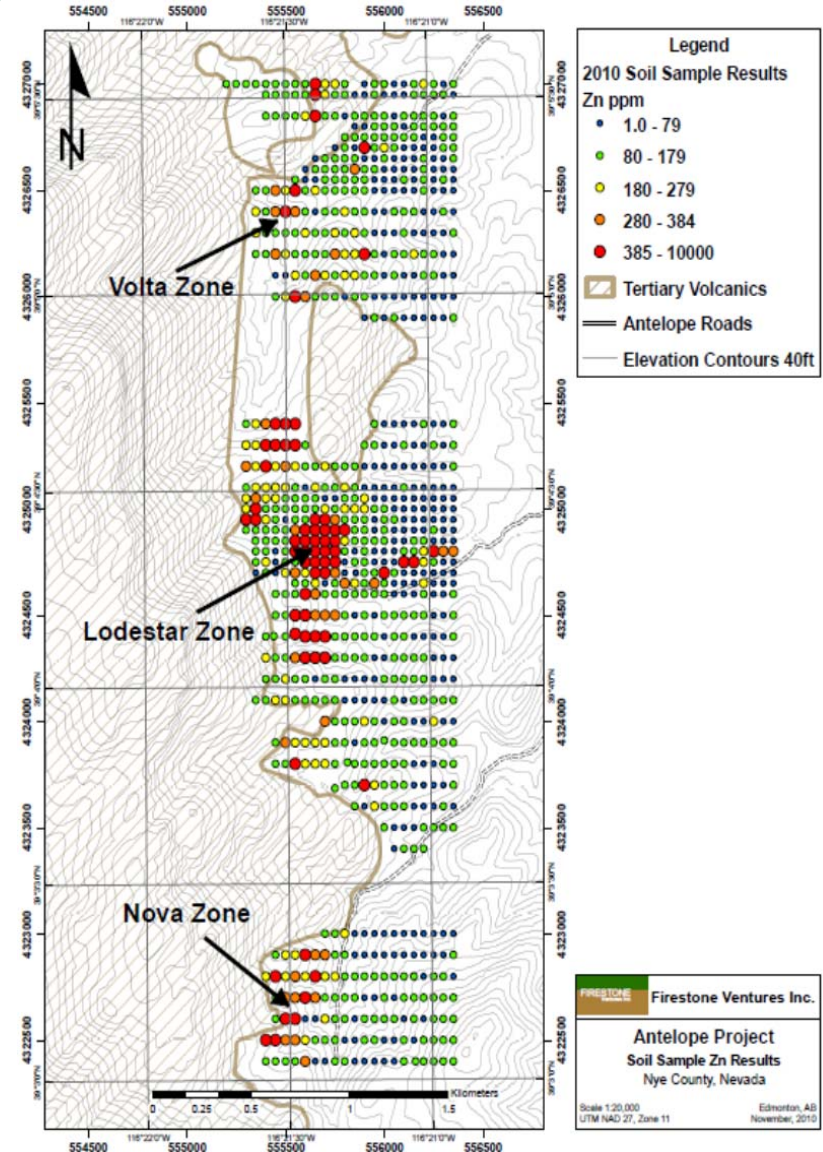
HIGH-GRADE ZINC MINERALIZATION (as shown by red "zinc-zap" reaction) LODESTAR ZONE

ANTELOPE PROPERTY (zinc-lead-silver prospect)

- Drill ready, final permitting approval pending
- Located 75 km southwest of Eureka in Nye County, Nevada
- Option to earn 100% interest in the 621-acre (250-hectare) Antelope project through Lease Option Agreements signed with two underlying vendors
- Five chip samples from the Lodestar trench contained **22.3% to 32% zinc and 1.51% to 3% lead over 15m**
- 4km zinc corridor on Antelope drill-ready (subject to permitting)
- Road accessible, mining-friendly jurisdiction

2010 Surface Exploration Program Completed

- 823 soil samples collected returned values up to **10,000 ppm zinc (1% zinc)**
- 119 rock samples collected returned values up to **18.4% zinc, 2.7% lead and 12.5 ppm silver**
- High-grade zinc mineralization in the 700m x 250m Lodestar Zone
- Rock and soil sampling results have defined a 4km long zinc-lead-silver anomalous zone running north-south
- Stratabound zinc mineralization in hosted in lower Ordovician dolomite



Firestone Ventures Inc.

Antelope Project
Soil Sample Zn Results
Nye County, Nevada

Scale 1:20,000
UTM NAD 83, Zone 11
Edmonton, AB
November, 2010

- Pure zinc play company with exposure to silver and lead.
- New government pro-resource development in Guatemala starting 2012.
- Four zinc drill programs planned for Guatemala; will be prioritized.
- Tahoe Resources, Goldcorp and Anfield Nickel moving forward on Guatemala projects.
- Firestone's cost of acquisition and exploration for the Torlon Hill project is \$0.03 for every pound of zinc-equivalent metal defined to date.
- Completed 8,590 metres of diamond drilling at Torlon Hill in 105 holes, deposit is still open.
- 330 million pounds of zinc, 114 million pounds of lead and 978,000 ounces of silver have been defined to date. Mineralization is on or near-surface.
- Torlon Hill is 22km from Pan-American Highway and access to Pacific Ocean ports.
- Community relations work and metallurgical studies underway.
- Fieldwork ongoing in central Guatemala – have started announce new projects (e.g. La Luna)
- Identified favorable carbonate target horizon for zinc exploration in central Guatemala.