

Drilling for High-grade Zinc on the Torlon Property, Guatemala

Toronto Venture Exchange Symbol: **FV**

Frankfurt Exchange Symbol: **F5V**



FIRESTONE
VENTURES INC.

Corporate Presentation – June 2009

Legal Disclaimer

This presentation contains forward looking statements; including in particular, statements about Firestone Ventures Inc.'s plans, strategies and prospects. These have been based on the Company's current assumptions, expectations and projections about future events.

Although the Company believes that the expectations reflected in these forward looking statements are reasonable, the Company can give no assurance that these expectations will prove to be correct or that the results anticipated in the forward looking statements will be achieved. Those forward looking statements include risks and uncertainties, which relate to, amongst other things, market conditions, industry uncertainty and other such factors which may cause the Company's actual results to be materially different.

Firestone Overview

- Focused on zinc-lead exploration and development.
- Extensive property holdings (500 km sq) in two historic zinc-lead mining districts of Guatemala, Central America.
- The Cuchumatanes and Coban carbonate mining districts have not been explored using modern methods, despite the historic open-pit and underground mining of surface occurrences.
- Exploration technology, new processing technologies for zinc and zinc oxide/sulphide ores and the understanding of the occurrence and genesis of carbonate-hosted base metal deposits has significantly advanced over the past 50 years, increasing the potential for economic deposits and new discoveries.

Management & Directors

Lori Walton, M.Sc., G.G., P.Geol. – President and CEO, Director
25 years' experience managing projects, exploration programs and joint ventures

Greg Hayes, C.A. – CFO
President of Northern Tiger Resources Inc.

John Cleary, M.Sc., G.G., C.P.G. – Vice President, Exploration
35 years' extensive project mgmt. experience with senior & junior mining companies

Pamela Strand, M.Sc., P.Geol. – Director
President of Shear Minerals Inc.

Ken Powell, DDS – Chairman and Director
President of Titan Trading Analytics Inc.

John Kowalchuk, P.Geo. – Director
VP Exploration Canalaska Uranium, 40 years' experience

Capital Structure

Shares Issued:	70,459,757
Fully Diluted:	78,660,550
Recent Share Price:	\$0.12
52 week high/low:	\$0.04 to \$0.45
Working Capital:	\$ 700,000

Outstanding Warrants & Options

<u>Exercise Price</u>	<u>Number</u>	<u>Value</u>	<u>Expiry Date</u>
<i>Warrants</i>			
\$0.50	1,715,793	\$ 857,897	Jan. 14, 2010
<i>Options</i>			
\$0.11	325,000	\$ 35,750	July 28, 2009
\$0.10	50,000	\$ 5,000	July 28, 2009
\$0.11	75,000	\$ 8,250	August 8, 2009
\$0.15	125,000	\$ 18,750	March 30, 2010
\$0.18	425,000	\$ 76,500	March 30, 2010
\$0.60	135,000	\$ 81,000	May 1, 2010
\$0.15	125,000	\$ 18,750	Oct. 14, 2010
\$0.175	450,000	\$ 78,750	Oct. 14, 2010
\$0.68	1,480,000	\$ 1,006,400	May 3, 2011
\$0.58	515,000	\$ 298,700	May 3, 2011
\$0.34	150,000	\$ 51,000	August 10, 2011
\$0.80	1,010,000	\$ 808,000	June 19, 2012
\$0.68	285,000	\$ 193,800	June 19, 2012
\$0.10	1,335,000	\$ 133,500	December 15, 2013
TOTAL OPTIONS	6,485,000	\$ 2,814,150	

About Zinc

- The 4th most common metal in use after iron, aluminum and copper.
- Occurs naturally in the human body.
- Necessary for humans, animals and plants.
- Important for the immune system, pregnant women, healthy skin and is crucial for learning.
- Found in many foods, including broccoli, and is used as an additive for plant fertilizer and animal feed.



Uses of Zinc

50% of zinc is used in galvanizing to protect steel from corrosion.



Uses of Zinc

16% of zinc is used in production of zinc alloys (die casting).



Uses of Zinc

19% of zinc is used to make brass.



Uses of Zinc

The average car contains:



- 20 lbs of zinc for door handles, locks and other die cast parts.
- 17 lbs of zinc for rust protection.
- ½ lb of zinc in each tire.

Uses of Zinc

Zinc is also used in:



Fertilizer

Vitamins

Sunscreen

Watercolors

Paints

Batteries



Zinc Deposits & Mining

Zinc is found as two types of ore:

1. sulphide (metallic) ore, which is more common than,
2. non-sulphide (non-metallic ore, also called “oxide zinc”).



Metallic Zinc Ore: Sphalerite



Non- Metallic Zinc Ore: Smithsonite

Zinc Sulphide Ore Deposits

Most zinc deposits are sulphide deposits where the zinc mineral (usually sphalerite – ZnS) is concentrated at the minesite then shipped to refineries/smelters for processing into zinc metal.



Zinc Oxide Ore Deposits

There are about 40 known non-metallic zinc occurrences (popularly known as “zinc oxide”) and deposits around the world.

Examples include:

- Skorpion Mine (Namibia)
- Angouran Mine (Iran)
- Accha deposit (Peru),
- Shaimerden Mine (Kazakhstan)
- Jabali Mine (under construction - Yemen)



Zinc oxide

Zinc oxide deposits have been overlooked until recently. Most companies previously targeted zinc oxide deposits to explore for hidden sulphide “root” primary ore.

Zinc Outlook

20 zinc smelters curtailed production

Improved economic outlook for China, infrastructure programs

Stockpiling of zinc by China's State Reserve Bureau

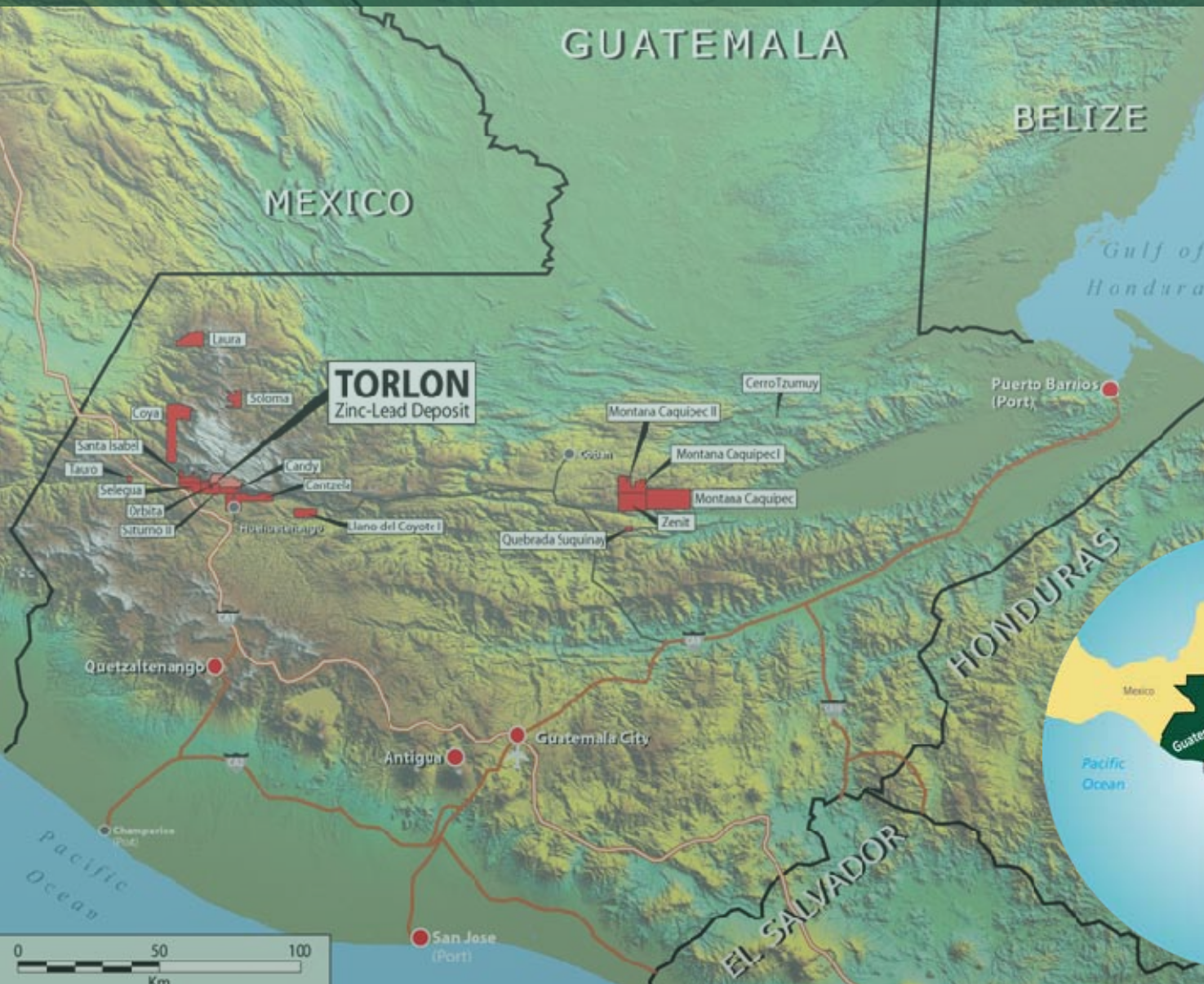
Few zinc pure-plays

Guatemala

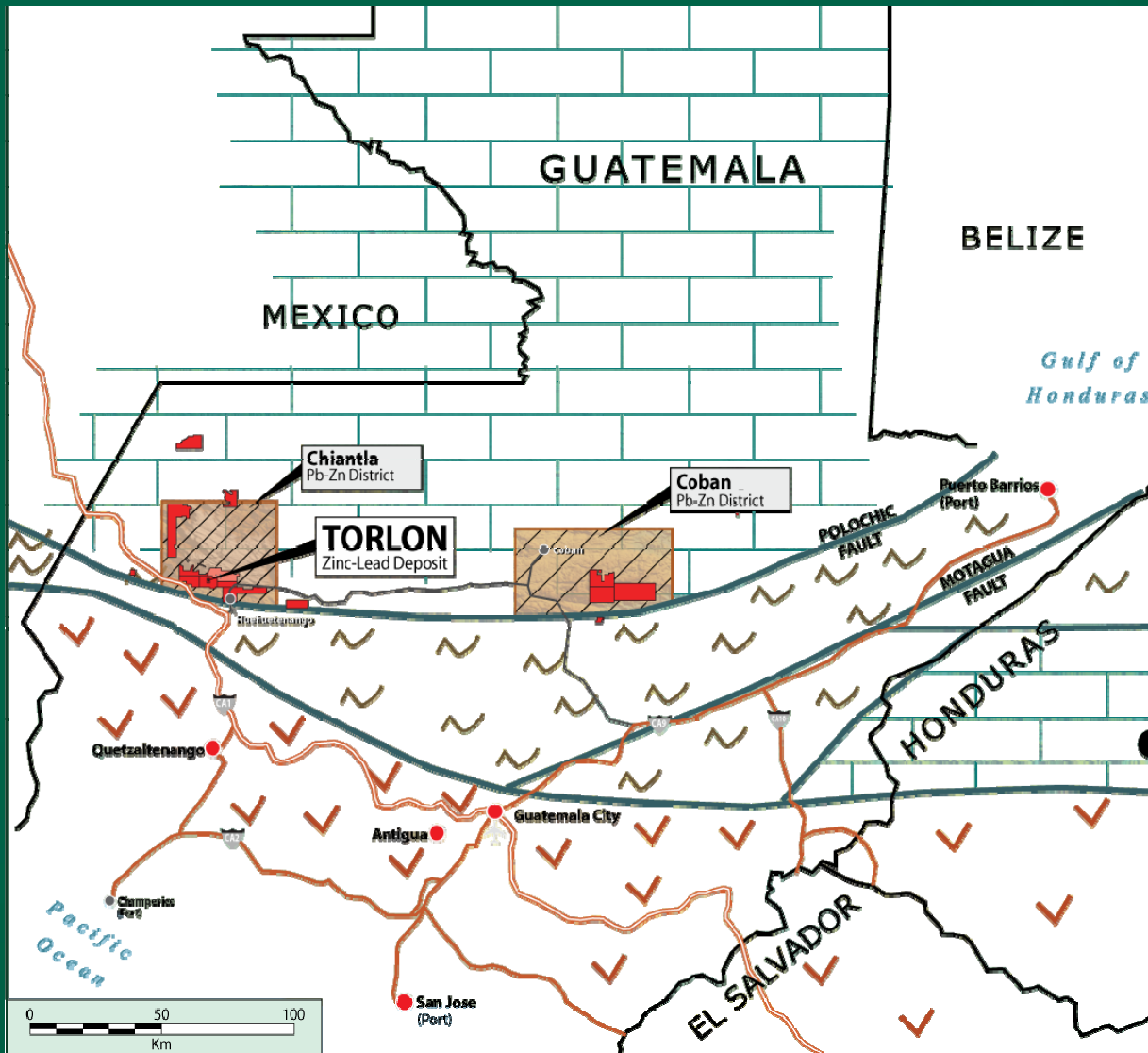


- Underexplored, very little modern mineral exploration
- Democratic government with 13 million people
- Two mines opened in the past three years
- Access to Pacific and Atlantic Ocean Ports
- Infrastructure spending

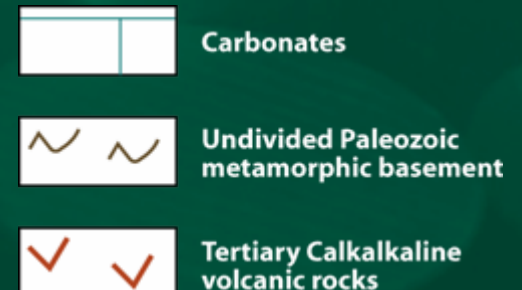
Firestone's Guatemala Holdings



Guatemala Zinc-Lead-Silver Districts



Breakwater Resources
El Mochito Mine
Pb-Zn-Ag



Torlon Hill Zinc-Lead Property

The Torlon lead and zinc occurrences have been mined for centuries. Spanish priests taught locals to build a smelter to produce lead bars.



Torlon Hill Zinc-Lead Property

- The Torlon Cooperativa (54 families) owned and operated the smelter until recently.
- The Cooperativa invited mining companies to help develop the zinc-lead-silver potential.



Torlon Hill Zinc-Lead Property

- Firestone Ventures conducted the first-ever drill program at Torlon Hill in early 2006.
- We have used small, environmentally friendly, manually portable drills supplied by Kluane Drilling.

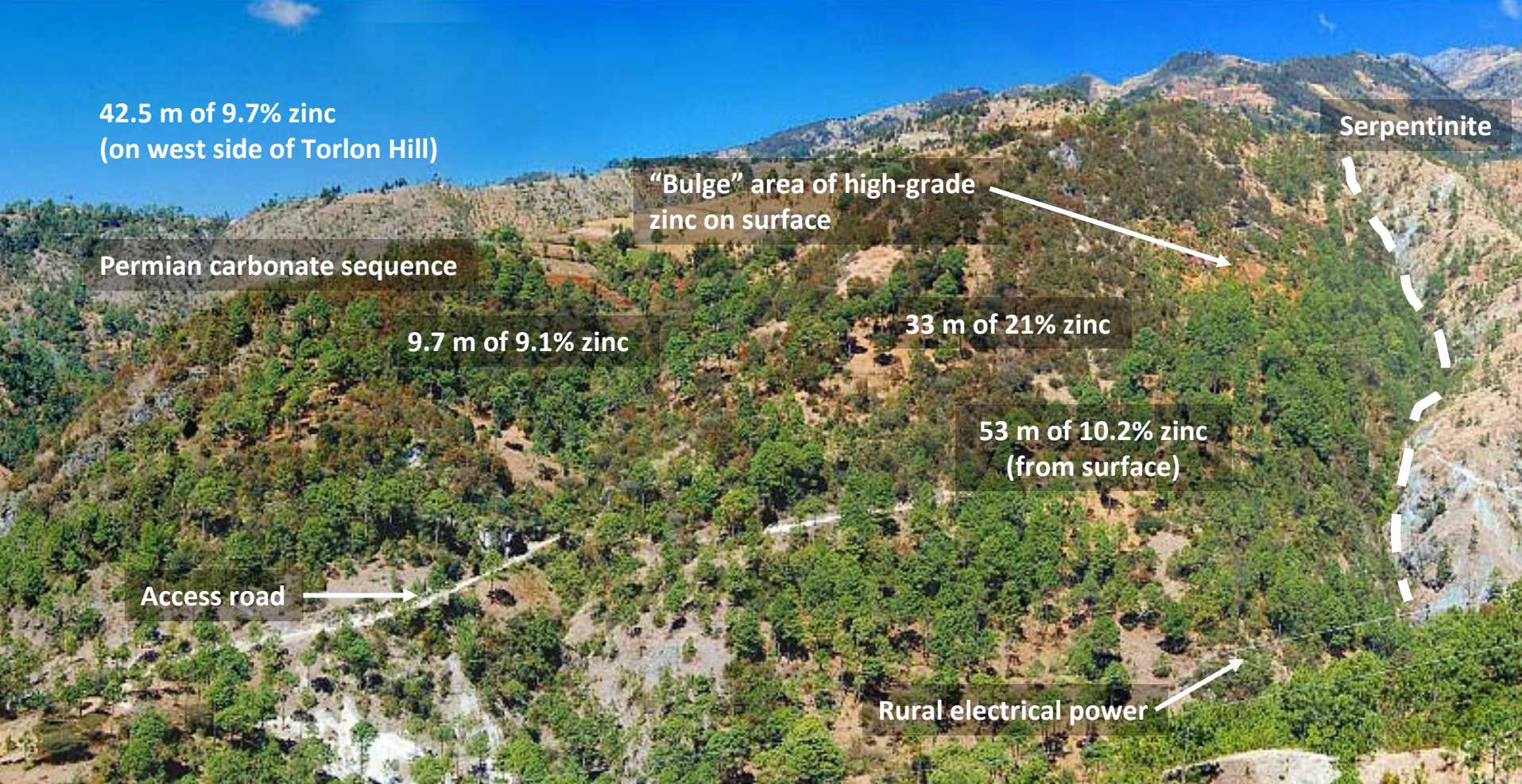


Torlon Hill Zinc-Lead Property

Firestone Ventures Inc. completed a 100% purchase option with the Torlon Cooperativa to acquire the property.



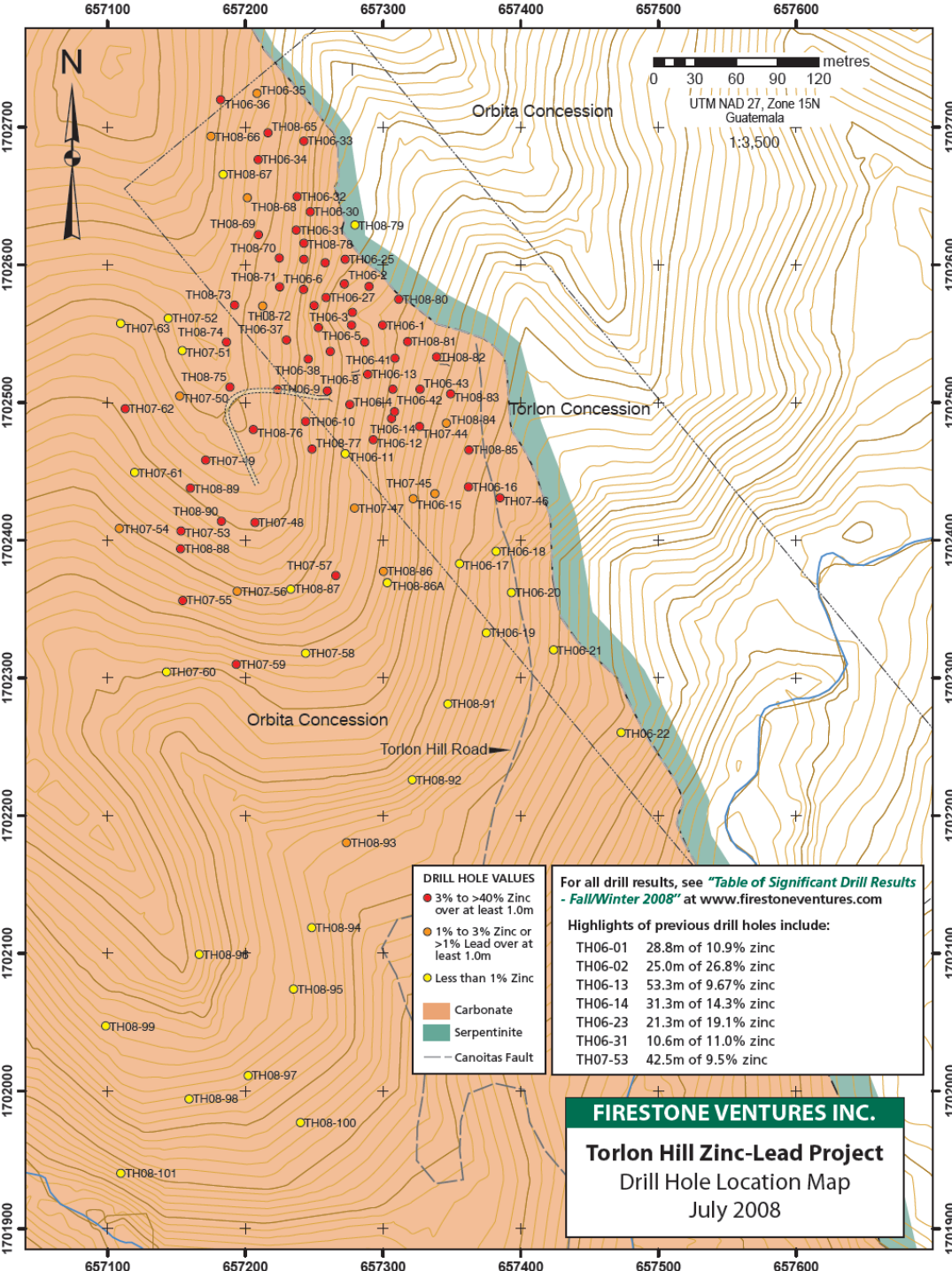
Moving the drill



Since 2006, Firestone has completed three drill campaigns with 101 holes drilled totalling 8,400 metres.

The deposit remains open to the west and the south.

Torlon Hill Drilling



Intersections include:

Hole	Thickness	Zinc	Lead	Silver
TH06-2	33.0 m	21.0%	1.4%	8.0 g/t
TH06-13	53.3 m	10.2%	1.7%	13.0 g/t
TH06-14	6.7 m	12.5%	0.4%	5.0 g/t
TH06-23	22.9 m	11.3%	3.4%	25.0 g/t
TH06-27	19.8 m	13.2%	2.9%	20.0 g/t
TH06-28	15.8 m	19.5%	2.3%	16.0 g/t
TH06-41	25.6 m	10.1%	3.8%	15.0 g/t
TH07-44	29.3 m	12.4%	4.2%	18.0 g/t
TH07-53	42.5 m	9.7%	4.7%	20.0 g/t
TH08-80	19.8 m	10.0%	4.7%	13.83 g/t

Torlon Hill Mineralization

- Mineralization at Torlon Hill consists of zinc carbonate (smithsonite) and lead carbonate minerals with minor amounts of galena.
- Some drill holes intersect thin (1 to 2 m thick) zones of massive pyrite-galena-sphalerite at the bottom of the hole just above the contact with the underlying serpentinite.
- Sulphides constitute only a minor portion of total mineralization.



Torlon Hill Mineralization

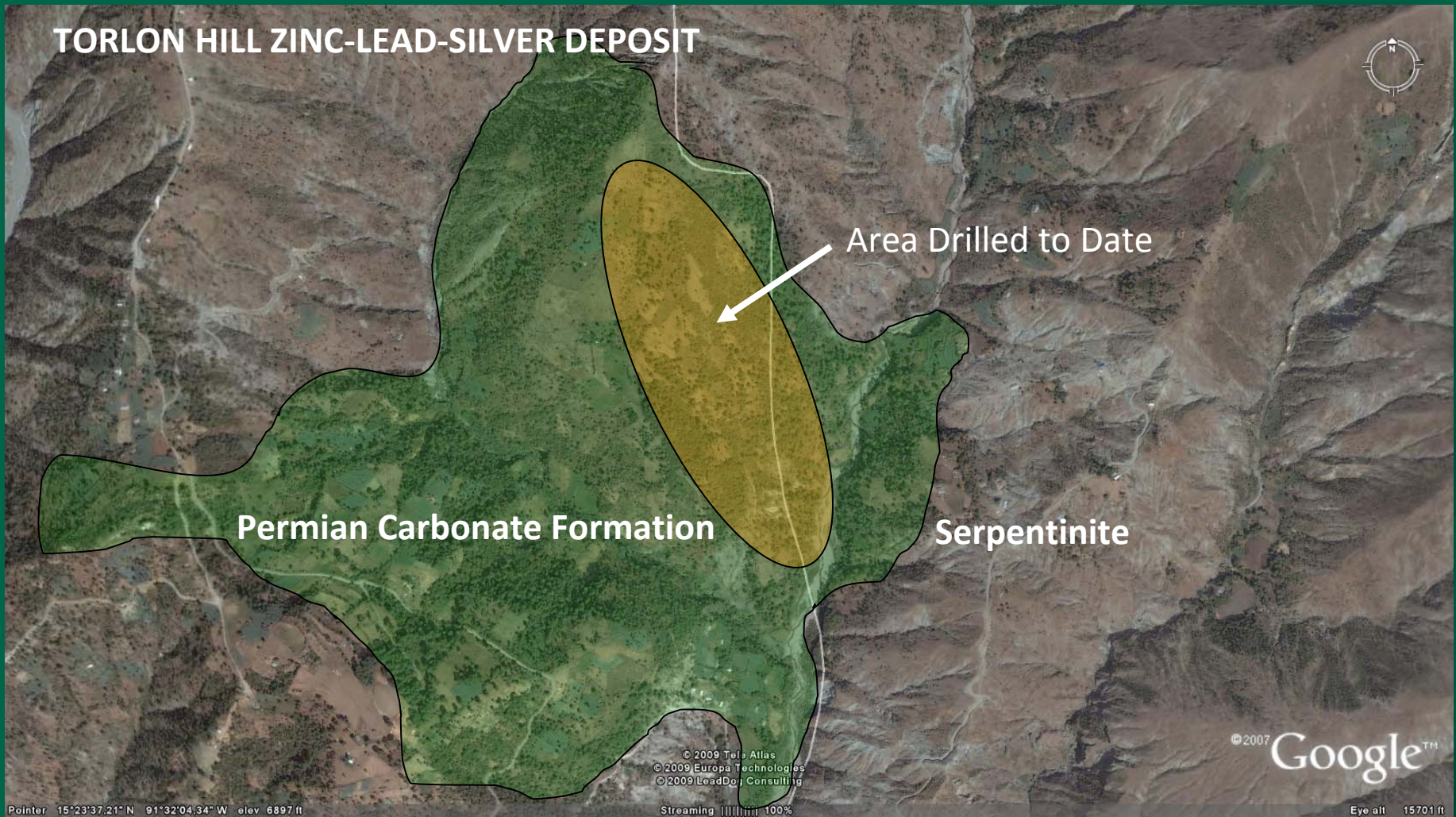


Core from Drill Hole TH06-02. Zinc mineralization is in the form of smithsonite, a zinc carbonate. This section returned over 40% zinc.

Torlon Hill Mineralization



Drill Intersection showing “zinc zap” reaction

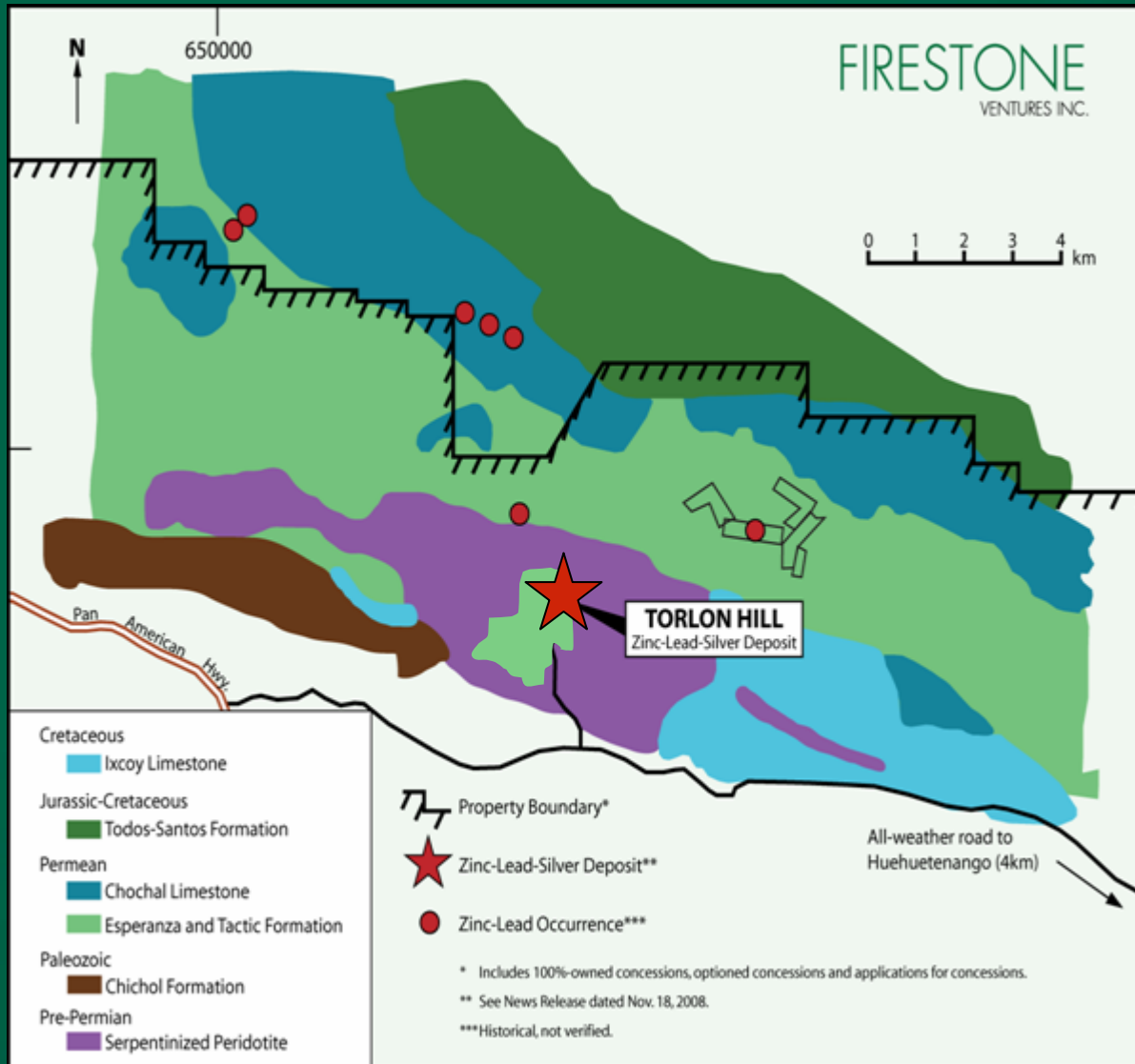


Torlon Hill is an intensely oxidized zinc-lead deposit hosted in Permian dolostone breccia and limestone. The carbonate unit has been tectonically thrust over a serpentized basement sequence at the boundary between the North American tectonic plate and the Caribbean tectonic plate.

The “tectonic crush zone” at Torlon Hill is pervasively mineralized with thick zones returning in excess of 10% and locally up to 40% zinc.

The deepest drill hole to date is 185.97 metres.

Cuchumatanes Zinc-Lead-Silver District



Lead-zinc-silver deposits in the Cuchumatanes district are replacement deposits in Permian limestone.

The district lies on the northern boundary of the junction of two tectonic plates.

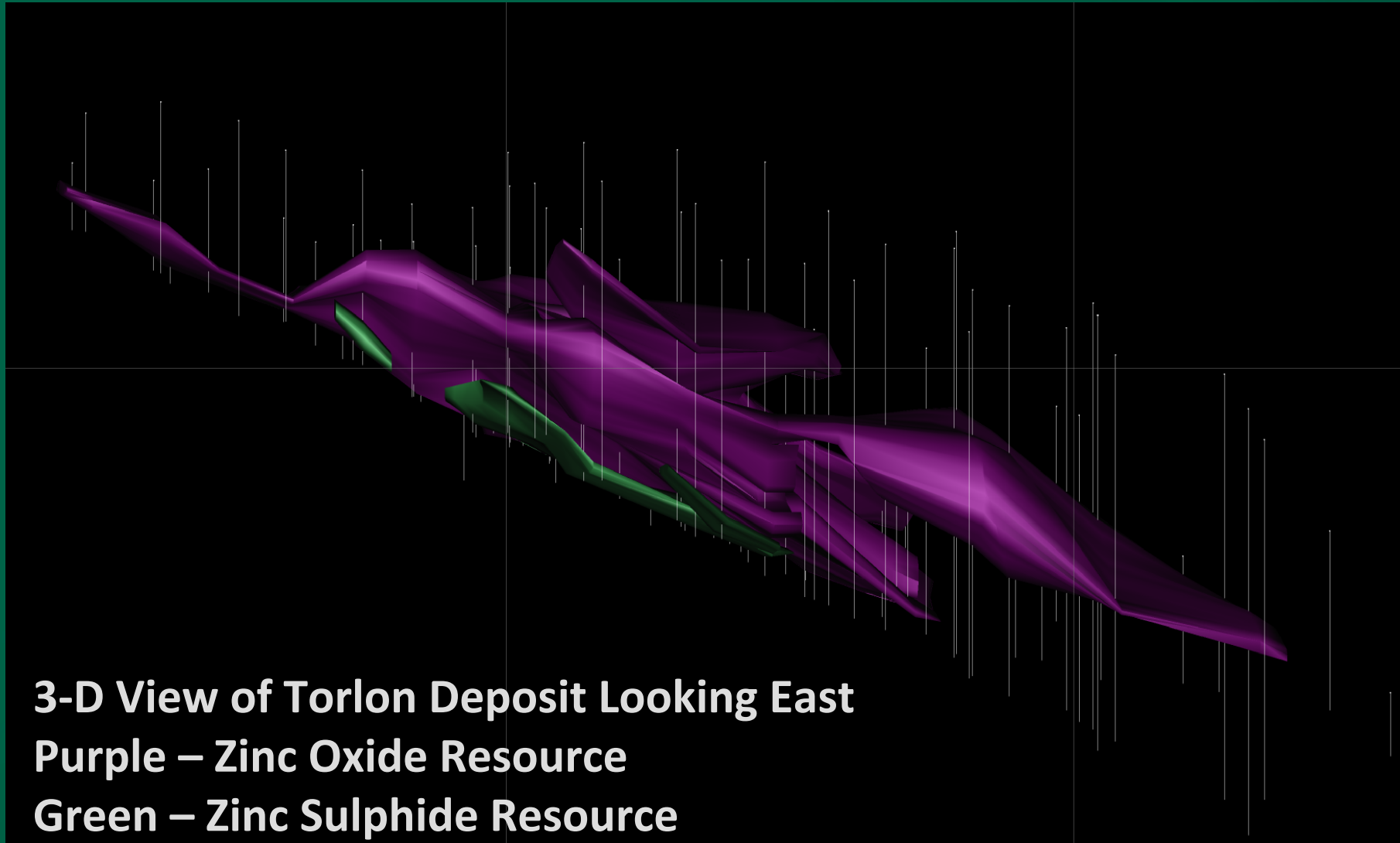
Tectonic brecciation has contributed to oxidation of primary galena, sphalerite and pyrite to smithsonite, anglesite and cerussite.

There are numerous zinc-lead-silver occurrences and surface showings that have been mined in the past; however, no comprehensive modern exploration of the belt took place until Firestone Ventures first drill program in 2006

Resources (Torlon Hill)

Measured and Indicated - Oxide Resource:	1.9 million tonnes grading 7.32% zinc, 2.41% lead and 14.25 g/t silver
Measured and Indicated - Sulphide Resource:	76,054 tonnes grading 3.23% zinc, 2.60% lead and 12.50 g/t silver
Inferred Oxide Resource:	170,000 tonnes 4.42% zinc, 1.96% lead and 12.53 g/t silver
Inferred Sulphide Resource:	36,291 tonnes grading 2.79% zinc, 2.03% lead and 10.47 g/t silver
Combined zinc+lead grade for the Measured and Indicated Oxide Resource	10.55%

Torlon Hill Ore Resource Estimate



Metallurgical Results

Initial Metallurgical Testing at SGS Lakefield was conducted on a sample with an average grade of 11.3% zinc and 3.97% lead.

Dense Media Separation:

- 55% of carbonate was removed with losses of 5% of the lead and 8% of the zinc.

Flotation:

- Flotation testwork produced zinc and lead recoveries up to 79% and 82%

Zinc concentrate grades ranged from 30% to 40%.

Metallurgical Results

- A preliminary characterization test was carried out to assess the amenability of zinc at Torlon Hill to acid/alkaline leaching with the production of zinc metal through electrowinning.
- Initial test results were on an ore sample (not pre-concentrated) returning an average grade of 12.9% zinc and 3.5% lead.
- Leach recoveries approached 80% for zinc and 60% for lead.
- A high concentration solution was subjected to direct electrowinning and a final zinc metal cathode “sponge” product was produced which contained 99.5% zinc.

Community Relations

- Community projects are implemented through an existing community cooperation agreement with people who live in the area.
- The projects are put forward by community members and agreed to by consensus.
- Typically the communities supply labor and the Company provides the materials needed to complete the project.
- Projects currently underway include a comprehensive oral history of the Torlon area and its people, road maintenance and tree-planting.

Community Relations

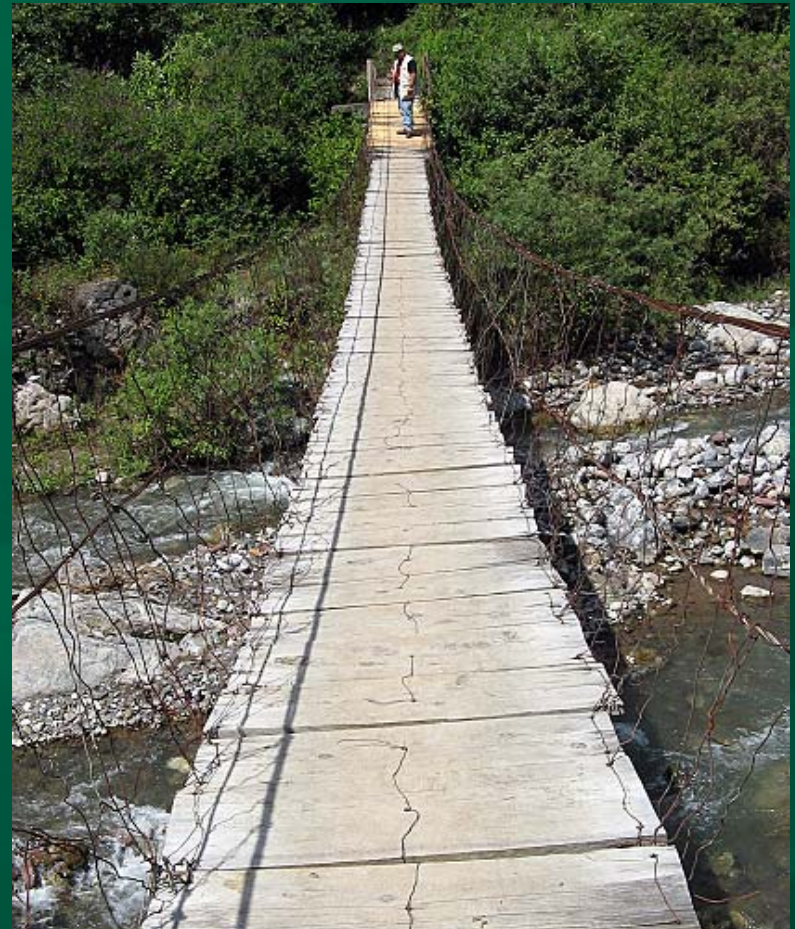
Examples of completed projects include:

Stream Crossing



People from six communities provided labor over five months to build a platform so the local stream could be crossed safely in the rainy season.

Footbridge Maintenance and Repair



Community Relations

School Bathroom Construction



Community Kitchen Construction



Our Progress

- Firestone Ventures signed an agreement to acquire the Torlon Hill zinc-lead-silver project in December, 2004.
- The first drill program at Torlon Hill took place in early 2006.
- To date, CDN \$5 million has been spent on acquisition, exploration and advancement of the project.
- Completed 8400 metres of diamond drilling in 101 holes, deposit is still open.
- 330 million pounds of zinc, 114 million pounds of lead and 978,000 ounces of silver have been defined to date.
- Mineralization is easily accessible and visible on or near surface.
- Dominant land holder in two zinc districts in Guatemala.
- Initial metallurgical testwork has begun.
- Excellent supplies and services, trained local workforce, supportive communities.
- 22 km from Pan-American Highway and access to Pacific Ocean ports.

Investment Proposition

- Successful spin-out of Canadian assets in a strategic partnership with Capstone Mining allowed Firestone Ventures to reduce dilution, share expenses and focus on becoming a zinc-only company.
- Pure zinc play.
- Preliminary resource outlined open to expansion.
- Mineralization on or near-surface and amenable to open-pit extraction.
- Exploration blue-sky within massive mineral tenure unexplored using modern methods.
- Shareholders have significant leverage to an improving zinc commodity price.

FIRESTONE

VENTURES INC.

www.firestoneventures.com

1-888-221-5588